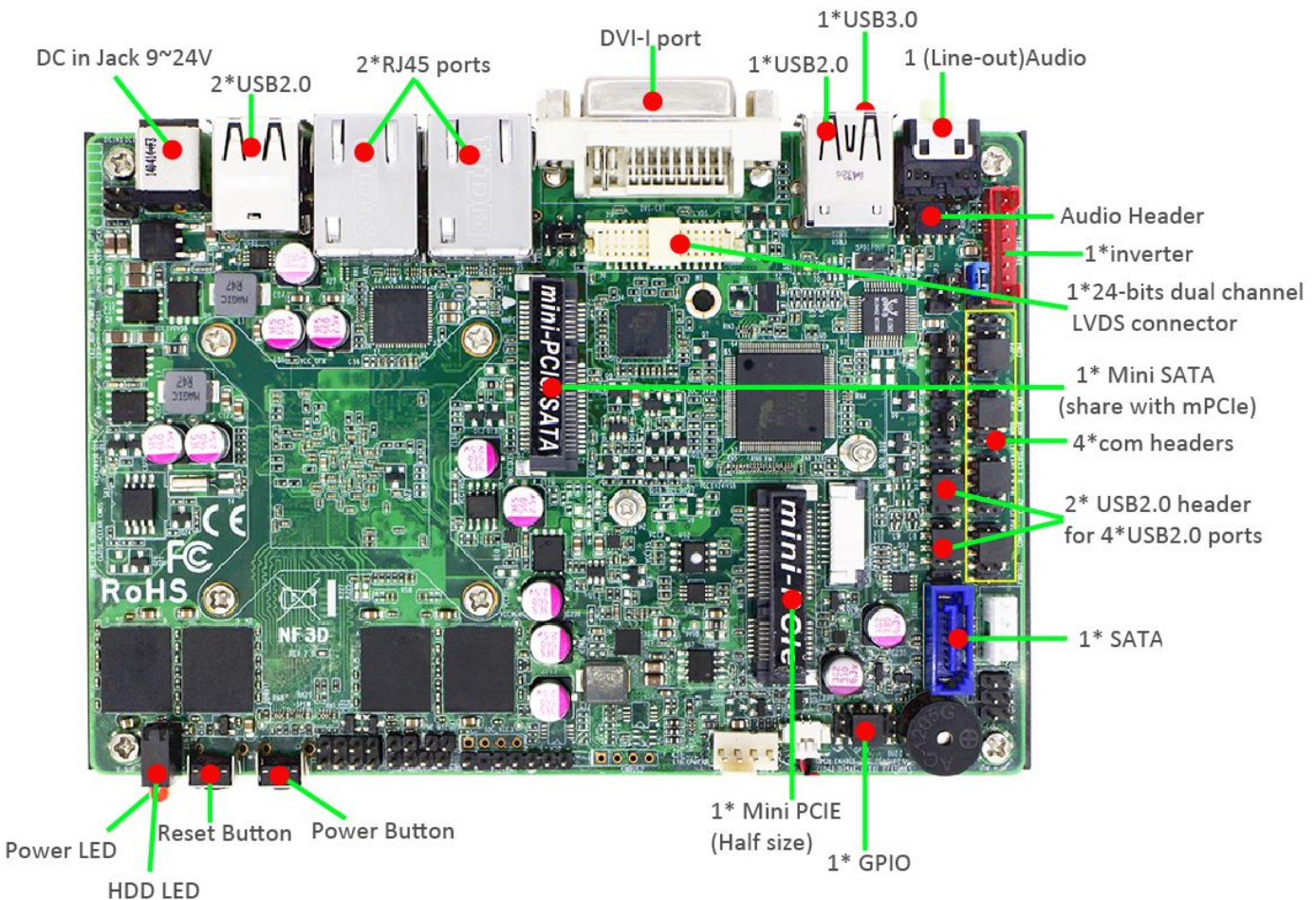
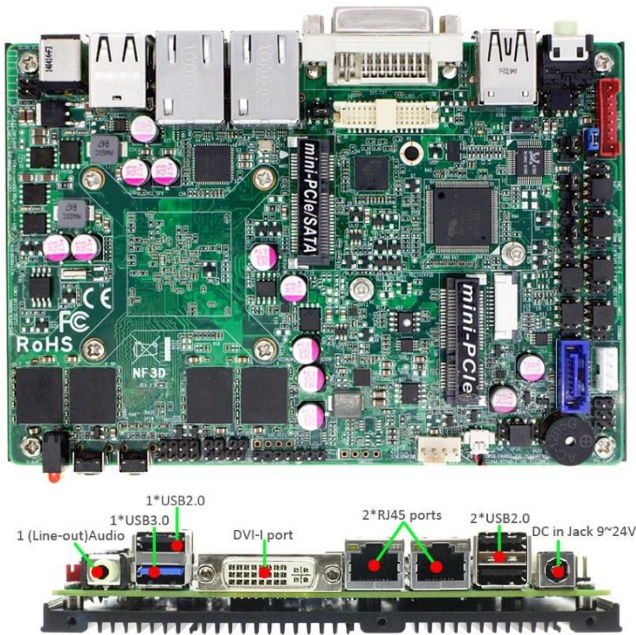


NF3D Series

Fanless 3.5" SBC Industrial Motherboard
Celeron N2930 / 2GB DDR3 / 2 Intel LAN / 9-24V

Features

1. Long-Life Embedded Class Industrial Motherboard with Planned Lifecycle Through Q1'2019
2. CPU Mounted on Bottom of Motherboard for Easy Integration into Fanless Systems
3. Intel Celeron N2930 SoC, 1.83GHz, Quad-Core, 7.5W
4. 2GB DDR3L-1333 Onboard Memory
5. Supports up to 2 Display, DVI-I, 24bit LVDS
6. 1 * SATA2 3Gb/s Port, 1 * mSATA/Mini-PCIE Shared Slot
7. 1 * Half-size Mini-PCIE Slot
8. 2 * Intel Gigabit LAN, HD Audio
9. 4 * Serial Port Headers, 8-bit GPIO, Watchdog Timer
10. 9V - 24V DC-In Jack
11. 3.5" SBC Form Factor (148mm x 102mm)



Model / Series	<ul style="list-style-type: none"> NF3D
Part No	<ul style="list-style-type: none"> JNF3D2-2930 (2GB Standard Model) JND3D4-2930 (4GB OEM MODEL, SPECIAL ORDER)
Processor	<ul style="list-style-type: none"> Intel Celeron N2930 SoC, 1.83GHz - 2.16GHz burst, Quad-Core, 7.5W TDP / 4.5W SDP
Chipset	<ul style="list-style-type: none"> SoC
Video	<ul style="list-style-type: none"> Intel HD Graphics, 313-854MHz
Memory	<ul style="list-style-type: none"> 2GB DDR3L-1333 onboard memory, non-expandable
Expansion Slots	<ul style="list-style-type: none"> 1 * mini-PCI Express slot (Half-size)
Storage	<ul style="list-style-type: none"> 1 * SATA2 3Gb/s port 1 * Shared mSATA/mini-PCI Express slot (Full-size)
Audio	<ul style="list-style-type: none"> Realtek ALC662 HD Audio
Network	<ul style="list-style-type: none"> 2 * Intel i211-AT Gigabit LAN
Other Features	<ul style="list-style-type: none"> Support ACPI S3, AHCI, CPU Smart FAN, Watchdog Timer 10-255 min/sec
Rear Panel I/O	<ul style="list-style-type: none"> 1 * USB 3.0 port, 3 * USB 2.0 ports 2 * RJ-45 ports 1 * DVI-I port Line Out 9V - 24V DC-in jack
Front Panel I/O	<ul style="list-style-type: none"> Power Button, Reset Button, Power LED, HDD LED
Internal I/O	<ul style="list-style-type: none"> 2 * USB Headers for 4 * USB 2.0 ports 24bit Dual Channel LVDS header & Inverter 4 * Serial port headers (3 * RS232, 1 * RS232/422/485), 1 * PS2 KB/MS combo header 8-bit GPIO header, Chassis Intrusion Header, AT/ATX power switch mode jumper
BIOS	<ul style="list-style-type: none"> AMI 64MB SMT Flash ROM
Box Contents	<ul style="list-style-type: none"> NF3D Motherboard, SATA Cable, Internal Power Cable, DVI-to-VGA Adapter, Manual, DVD Driver Disk
Certification	<ul style="list-style-type: none"> CE, FCC, RoHS, ErP
Temperature	<ul style="list-style-type: none"> Operating Temperature 0~60 ° C, Storage Temperature -20-85 ° C
Form Factor	<ul style="list-style-type: none"> 3.5" SBC Form Factor (148mm x 102mm)
Warranty	<ul style="list-style-type: none"> 2 Years Limited Warranty

*Specifications subject to change without notice, not responsible for typographical errors.



Jetway Computer Corporation
Phone: 510-857-0130 Fax: 510-857-0138
8058 Central Ave, Newark, CA 94560
www.jetwaycomputer.com

